

REVISION RECORD				
REV	ECD	DESCRIPTION	DRFT	CHKD

NOTES:

MATERIAL:

- 1. HOUSING MATERIAL : GLASS FILLED POLYESTER UL94V-0.
- 2. CONTACT MATERIAL : PHOSPHOR BRONZE t=0.35mm.
- 3. PLATING : GOLD PLATING 3u"~50u" OVER NICKEL

ELECTRICAL:

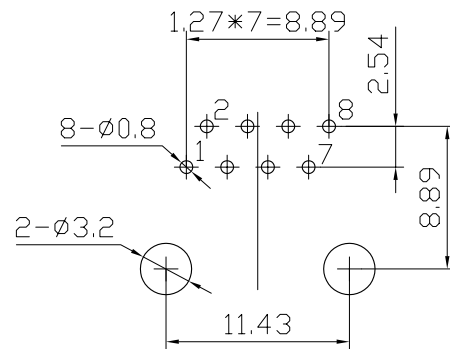
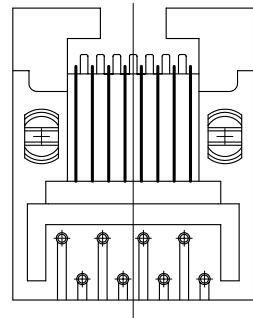
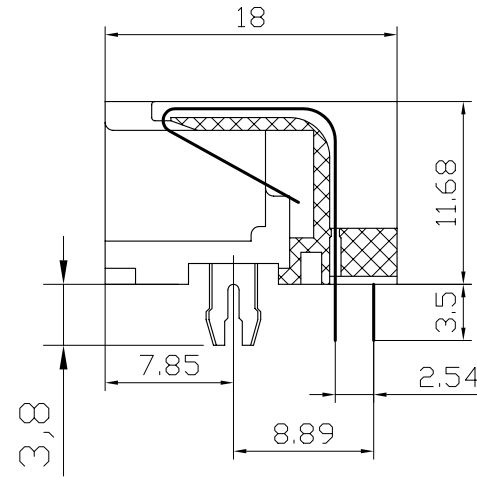
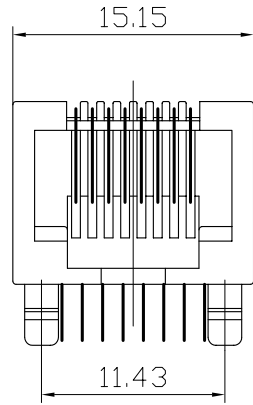
- 1. VOLTAGE RATING : 125 VAC RMS.
- 2. CURRENT RATING : 1.5 AMP.
- 3. CONTACT RESISTANCE : 30 MILLIOHMS MAX.
- 4. INSULATION RESISTANCE : 500 MEGOHMS MIN @ 500V DC .
- 5. DIELECTRIC WITHSTANDING RESISTANCE : 1000V AC RMS 50Hz. 1MIN.

MECHANICAL:

- 1. DURRABILITY : 750 CYCLES MIN.
- 2. PCB RETENTION PRE-SOLDER : 1 LB MIN.

ENVIRONMENTAL:

- 1. STORAGE : -40°C TO 85°C.
- 2. OPERATION : 0°C TO 70°C.



PC Board Layout
Component Side Shown

DETACHED LISTS	MM (INCH)		DFTO: SHB	DATE: 2007.05.05	Coorle Technology
	TOLERANCES EXCEPT AS NOTED		CHKD: LANB	DATE:	
			MFO:	DATE:	
			APPVL:	DATE:	
MM			MATERIAL :		5321 8P8C
.0 ± 0.15	±	QT'Y :			
.00 ± 0.075	±	FINISH :		DRAWING NO. TE53A1003	SIZE A3
.000 ± 0.05	±	SCALE :		/PART NO.	REV 0
ANGLES ± 0.5		THIRD ANGLE PROJECTION		DD NOT SCALE DRAWING	SHEET OF